

Innovating Safety for Every Mile

**WELLDON**

Ningbo Welldon Infant And Child Safety  
Technology Co.,Ltd.

[www.welldon.com](http://www.welldon.com)



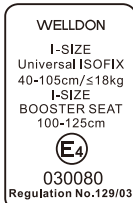
**WELLDON**

**SMART ROTATE 2 Pro**  
**USER MANUAL**



**WD016**

# Certification



This baby car seat features electronic installation detection for easier installation, ensuring maximum safety and comfort for your baby during travel.

### Recommended for:

**Age:** From birth to approx. 7 years

**Stature:** 40-125cm

Only suitable for vehicle seats with automatic three-point belts approved by UN Regulation No. 16 or a comparable standard.

| Tested and Certified According to ECE R129 |           |             |                              |               |
|--|-----------|-------------|------------------------------|---------------|
| Model No.                                  | Stature   | Orientation | Installation                 | Approval Type |
| SMART ROTATE 2 Pro                         | 40-105cm  | Rearward    | ISOFIX +Support Leg +Harness | i-Size        |
|  | 76-105cm  | Forward     |                              |               |
| WD016                                      | 100-125cm | Forward     | Vehicle 3 point belt+ ISOFIX |               |
|  |           |             | Vehicle 3 point belt         |               |

\*ECE = European Standard for Safety Equipment

The child safety seat has been designed, tested, and certified according to the requirements of the European Standard for Child Safety Equipment (ECE R129). The seal of approval "E" (in a circle) and the approval number are located on the approval label (sticker on the child safety seat).

This approval will be invalidated if any modifications are made to the child safety seat. Only the manufacturer is permitted to make modifications to the child safety seat.

# Digital Manual



**EN** Scan for user manual

**DE** Scan für Benutzerhandbuch

**FR** Scannez pour le manuel d'utilisation

**IT** Scansiona per il manuale utente

**ES** Escanear para el manual del usuario

**RU** сканируйте для руководства пользователя

**TH** สแกนคู่มือผู้ใช้

**AR** يحاشرليل ايلخلح لسم

**HE** סרוק להורדת הוראות שימוש

more



This child safety seat complies with UN Regulation No. 129/03. Please read the full instructions carefully before installation and using this product.

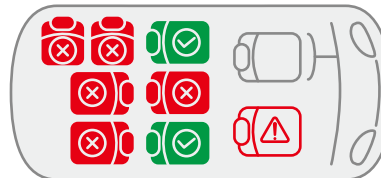
## Basic Information



**SMART ROTATE 2 Pro**  
WD016

## Basic Information

### Use In The Vehicle



Proper seating positions for your child car seat.



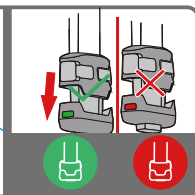
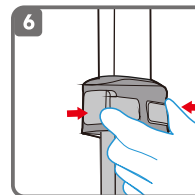
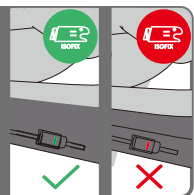
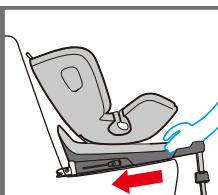
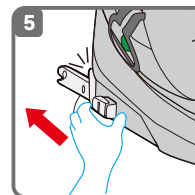
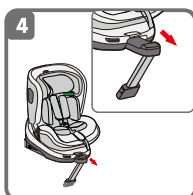
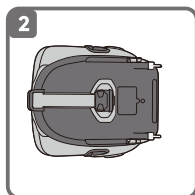
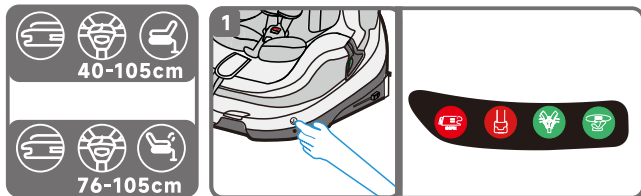
If you need to install the seat in the front passenger seat, please ensure that the airbag is deactivated to avoid serious injury.

### **! WARNING!**

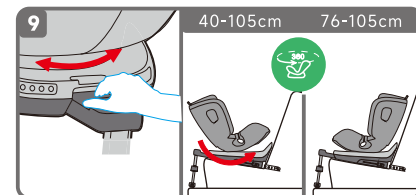
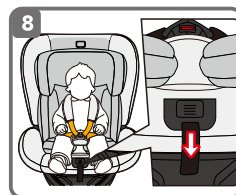
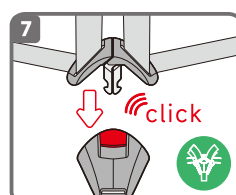
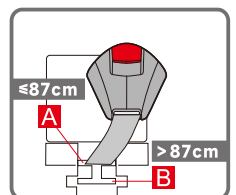
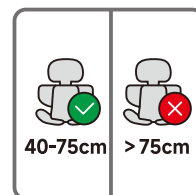
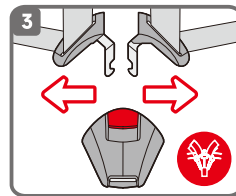
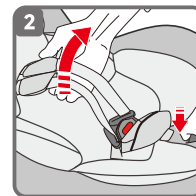
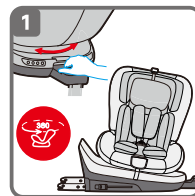
Never use this child restraint system in seating positions where an active airbag is installed.





# Quick Installation Guide

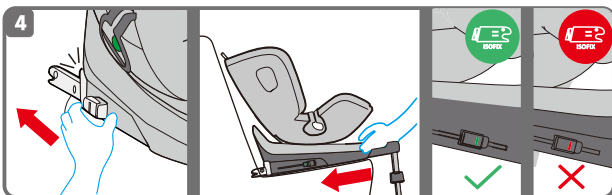
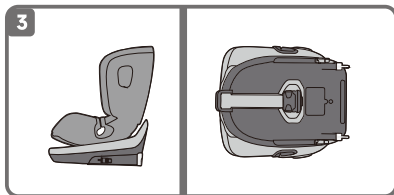
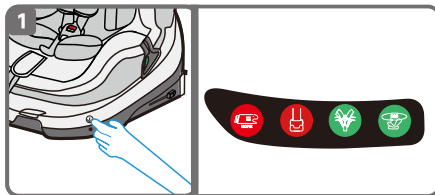
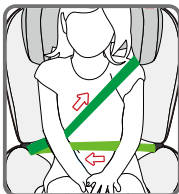


# Quick Installation Guide

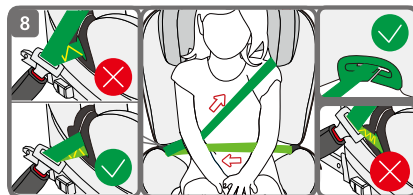
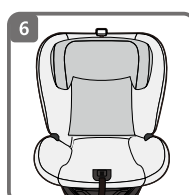
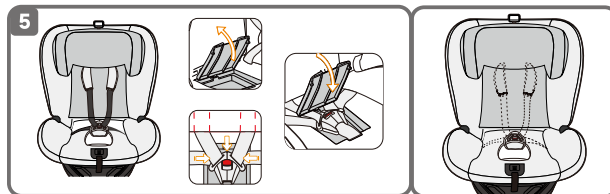


# Quick Installation Guide

  
**100-125cm**  




# Quick Installation Guide



# Table Of Contents

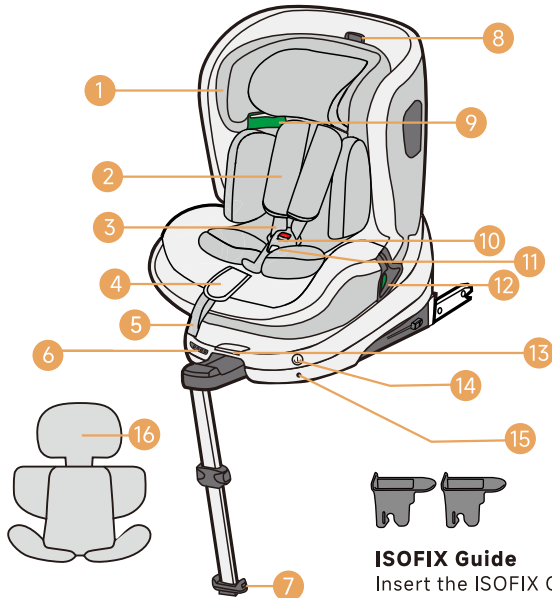
|   |       |
|---|-------|
| 1.Warning.....                                | 08    |
| 2.Product Description.....                    | 09-10 |
| 3.Basic Information.....                      | 11-12 |
| 4.Instruction for Stature 40cm+.....          | 13-16 |
| 5.Instruction for Stature 76-105cm.....       | 17-18 |
| 6.Instruction for Stature 100-125cm.....      | 19-20 |
| 7.Important Safety Precautions.....           | 21    |
| 8.Care and Cleaning.....                      | 22    |
| 9.Warranty.....                               | 13    |
| 10.Disposing of Old Electronic Equipment..... | 24    |
| 11.Safety Checklist.....                      | 25    |

**READ USER MANUAL PRIOR TO INSTALLING  
AND USING THIS BABY CAR SEAT.  
KEEP THIS MANUAL FOR FUTURE USE.**

# 1.Warning

1. The rigid items and plastic parts of the baby car seat should be located and installed so that they are not likely to become trapped by a movable seat or in the vehicle's door during everyday use.
2. Any straps securing the restraint to the vehicle should be tight. Straps or impact shields restraining the child should be adjusted to fit the child's body, and straps should not be twisted.
3. It is important to ensure that the lap straps are positioned lower than the baby's hips.
4. The baby car seat should be replaced if it has been subjected to violent stresses in an accident.
5. DO NOT leave your child unattended in the baby car seat.
6. Secure any luggage or other objects that could cause injuries in the event of a collision.
7. DO NOT use the car seat without the fabric cover.
8. DO NOT replace the cover of the baby car seat with anything other than the one recommended by the manufacturer, as the cover is an integral part of the restraint system's safety performance.
9. Refer to the vehicle manufacturer's handbook for the use of an "i-Size ECRS".

## 2. Product Description



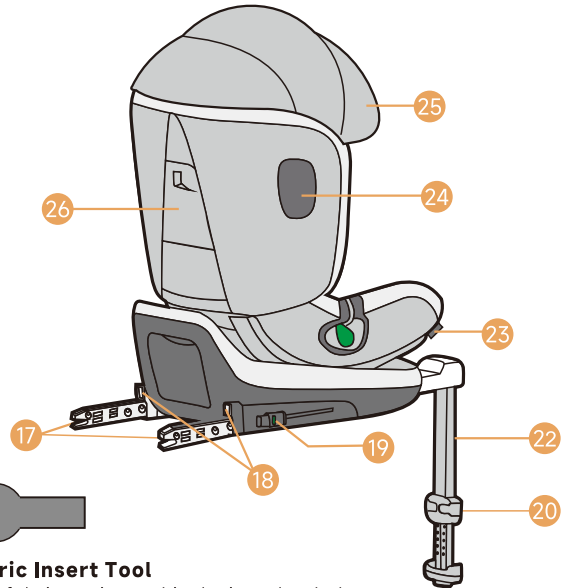
### ISOFIX Guide

Insert the ISOFIX Guides onto the car's anchors to attach the child seat securely.

- 10. Buckle
- 11. Crotch Pad
- 12. Lap Belt Guide
- 13. Rotation Handle
- 14. Power Switch
- 15. DC Power Plug
- 16. Newborn Insert

- 1. Headrest
- 2. Shoulder Pads
- 3. Shoulder Straps
- 4. Harness Release Button
- 5. Harness Adjustment Strap
- 6. HAWK-EYE Installation Indicator Panel
- 7. Support Leg Indicator
- 8. Headrest Adjusting Lever
- 9. Shoulder Belt Guide

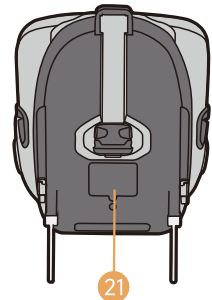
## 2. Product Description



### Fabric Insert Tool

This fabric assist tool is designed to help with installing fabric covers.

- 17. ISOFIX Connect Locking Arms
- 18. ISOFIX LED
- 19. ISOFIX Release Button
- 20. Support Leg Adjusting Button
- 21. Battery Pocket
- 22. Support Leg
- 23. Recline Angle Adjusting Handle
- 24. Side Impact Protection
- 25. Canopy
- 26. User Manual Storage



### 3. Basic Information

#### Canopy



#### Installing the Canopy

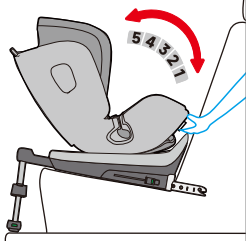
Insert the canopy into the mounting points located on both sides of the headrest to provide shade protection for your child.



#### Detaching the Canopy

Push the plastic parts on the outside of the canopy outward to detach the canopy from the car seat.

#### Recline Position Adjustment



The reclining positions can be adjusted for forward facing using with stature 76-105cm and 100-125cm.

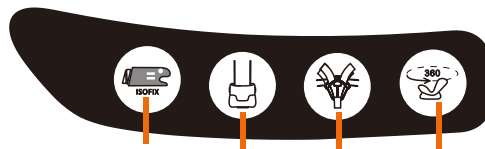
This product offers 5 recline positions. To adjust the position, pull the recline angle adjusting handle **(23)** and push or pull the seat into the desired position, make sure you hear a "click" sound so the seat is secured in place.

### 3. Basic Information

#### Hawk-Eye™ Installation Detection System



Before driving, ensure that all electronic indicators on the safety seat are green and that all necessary installation steps have been correctly followed.



ISOFIX Detection

Support Leg Detection

Buckle Detection

Rotation Detection

#### 1. ISOFIX Detection

- The green light indicates that the ISOFIX locking arms are successfully connected.
- The red light indicates that the ISOFIX locking arms are not connected.

#### 2. Support Leg Detection

- The green light indicates that the support leg is in complete contact with the floor.
- The red light indicates that the support leg is not fully in contact with the floor.

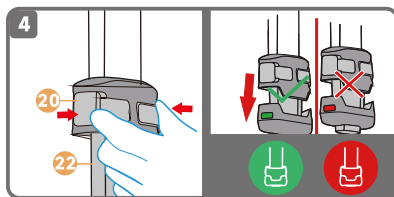
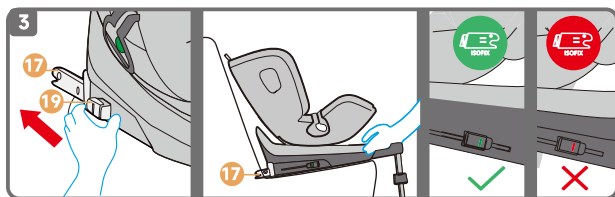
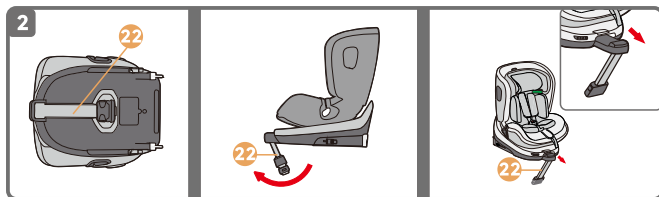
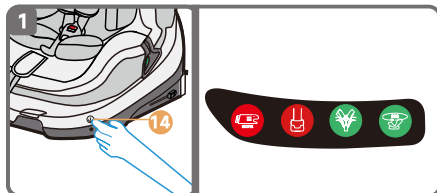
#### 3. Buckle Detection

- The green light indicates that the harness is buckled.
- The red light indicates that the harness is unbuckled.

#### 4. Rotation Detection

- The green light indicates that the seat is securely fixed in the rearward or forward position.
- The red light indicates that the seat is not in the proper direction.

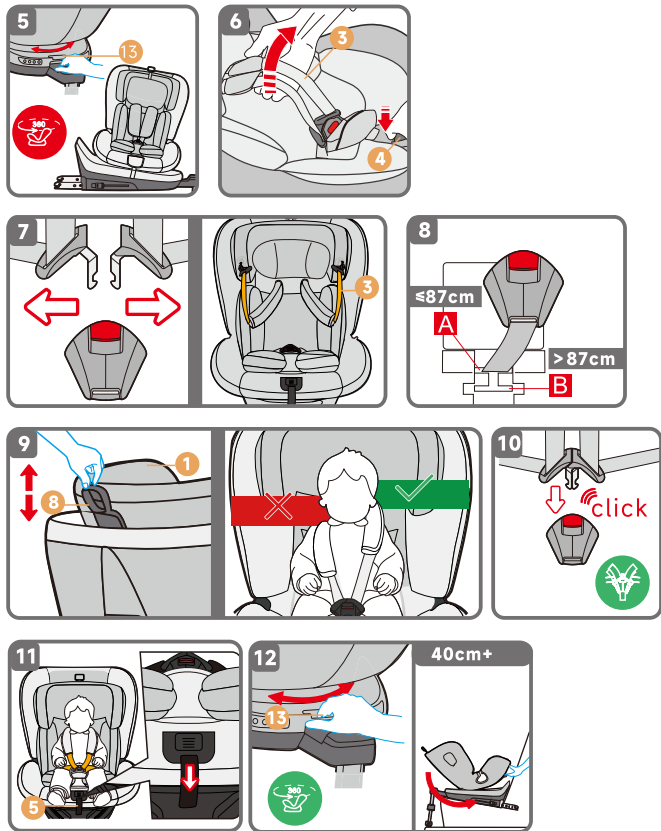
## 4. Instruction for Stature 40cm+



## 4. Instruction for Stature 40cm+

- 1 Press the power switch (14) to turn on the detection system.
- 2 Remove the support leg (22) from the bottom of the seat. Rotate the support leg (22) outward, then pull the support leg (22) outward.
- 3 Press the ISOFIX release button (19) and slide the ISOFIX connect locking arms (17). When the ISOFIX connect locking arms (17) are successfully inserted into the fixture points, check the ISOFIX green/red indicator to confirm the installation status.
- 4 Extend the support leg (22) by pressing the support leg adjusting button (20) and pulling out the support leg (22) until it rests firmly on the floor. Check the support red/green indicator to confirm whether the support leg (22) is fully in contact with the floor.

## 4. Instruction for Stature 40cm+



## 4. Instruction for Stature 40cm+

- Adjust the seat direction by pulling the rotation handle **(13)** and setting the seat to the side-facing position for easier access when placing your child into the seat after installation.
- Press the harness release button **(4)** and pull the shoulder straps **(3)** forward as far as possible to loosen them.
- Open the buckle by pressing the red button, then secure the shoulder straps **(3)** to the sides of the car seat.

**Notice:** The seat body has magnets on both sides that can attract and hold the metal tongues on the shoulder straps.

- Place the buckle **(10)** in slot A if your baby's height is  $\leq 87$  cm.

**Notice:** The seat body has magnets on both sides that can attract and hold the metal tongues on the shoulder straps.

- Pull headrest adjusting lever **(8)** to adjust the headrest **(1)** to the proper position ensures optimal protection for your child in the car seat. The headrest **(1)** must be set so that the shoulder straps **(3)** are at the same level as your child's shoulder or slightly above.

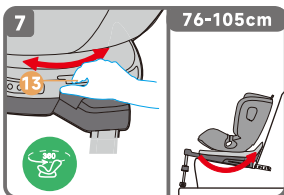
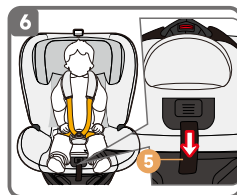
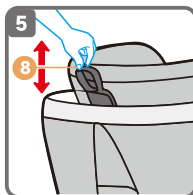
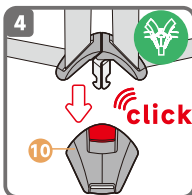
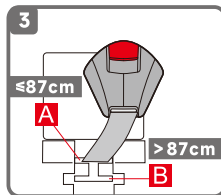
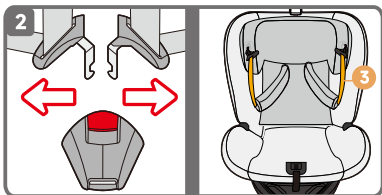
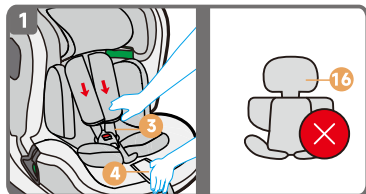
**Notice:** Ensure the child's head is positioned in the center of the headrest.

- Guide the two buckle latches together and engage them before inserting them into the buckle **(10)**. Make sure you hear a "click" sound, and buckle indicator will turn green.
- Put one hand in between the baby and the straps. Pull the harness adjustment strap **(5)** until the space between the baby and the straps is about the thickness of your palm.

**CAUTION!** Pull the strap end straight towards you, not upwards or downwards.

- After completing the above steps, pull the rotation handle **(13)** to turn the car seat to the rear-facing position.

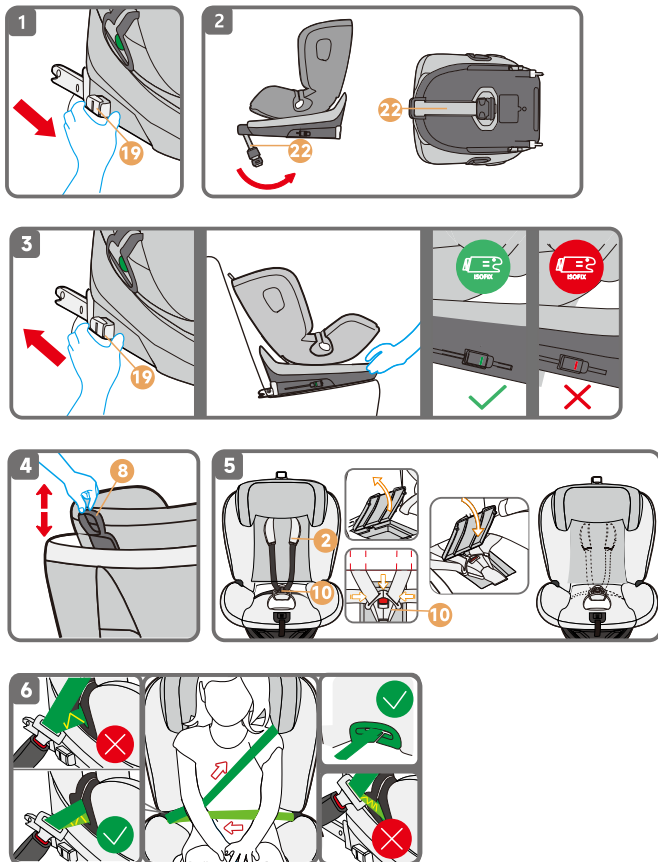
## 5. Instruction for Stature 76-105cm



## 5. Instruction for Stature 76-105cm

- 1 Remove the newborn insert (16), loosen the shoulder straps (3) by pressing the harness release button (4), and pull the shoulder straps (3) as far forward as possible.
  - 2 Open the buckle by pressing the red button, then secure the shoulder straps (3) to the sides of the car seat.
  - 3 Place the buckle (10) in slot B if your baby's height is between 87 cm and 105 cm.
  - 4 Guide the two buckle latches together and engage them before inserting them into the buckle (10). Make sure you hear a "click" sound and the buckle indicator turns green.
  - 5 Pull the headrest adjusting lever (8) upwards to the appropriate height, ensuring the shoulder belt is level with your child's shoulders.
  - 6 Put one hand in between the baby and the straps. Pull the harness adjustment strap (5) until the space between the baby and the straps is about the thickness of your palm.
- CAUTION!** Pull the strap end straight towards you, not upwards or downwards.
- 7 After completing the above steps, pull the rotation handle (13) to turn the car seat to the forward-facing position.

## 6. Instruction for Stature 100-125cm



## 6. Instruction for Stature 100-125cm

- 1 Press the ISOFIX release button (19) to slide the ISOFIX connect locking arms (17) and detach the ISOFIX from the vehicle seat.
- 2 Retracting the support leg (22), then rotate the support leg (22) backward to a 45° angle and push the support leg (22) inward until it is fully in place. Finally, tuck the support leg (22) into the slot at the bottom of the seat.
- 3 Press the ISOFIX release button (19) and slide the ISOFIX connect locking arms (17). When the ISOFIX connect locking arms (17) are successfully inserted into the fixture points, check the ISOFIX green/red indicator to confirm the installation status.
- 4 Adjust the headrest adjusting lever (8) upwards to the appropriate height.
- 5 Hide the shoulder pads (2) behind the headrest cover, open the buckle storage cover, properly assemble the buckle (10), then put it into the buckle storage and finally close the cover. The buckle storage is located beneath the main fabric cover, which needs to be opened to access the buckle storage.
- 6 Thread the seat belt through the shoulder belt guide (9) and lap belt guide (12). After ensuring the seat belt is correctly fastened on the baby car seat, lock the seat belt until you hear a "click."

**CAUTION!** Before every journey, ensure that the rotating part is fully engaged. Do not drive unless the seat is in a forward or rearward-facing position.

## 7. Important Safety Precautions



Never leave your child unattended in the child safety seat, especially when not in the vehicle.



**For the Protection of All Vehicle Occupants**  
In the event of an emergency stop or accident, unsecured persons or objects may cause injury to other vehicle occupants. Always ensure the following:  
The backrests of the vehicle seats are locked (e.g., the foldable rear seat bench latch is engaged).

- All heavy or sharp-edged objects in the vehicle (e.g., on the parcel shelf) are secured.
- All passengers in the vehicle have their seat belts fastened. The child safety seat is always secured when in the vehicle, even if no child is being transported.



**WARNING!** Please be sure to use only the original cover, as the cover is crucial for the secure operation of the system.  
Replacement seat covers are available from your retailer, agent, or the manufacturer.



The child seat must not be used without the seat cover.

**Caution:** When cleaning the seat, ensure that the body of the seat does not come into contact with water. There is a high probability that any electronic components will malfunction if they get wet.

## 8. Care and Cleaning

- Regularly inspect all components for any signs of damage. Verify the proper functioning of all mechanical parts regularly.
- To avoid damage or breakage, ensure the child seat does not become trapped in car doors, seat tracks, or other vehicle mechanisms.
- If the child seat sustains damage (e.g., from being dropped), it must be inspected by the manufacturer for safety assurance.

### Care For Harness Buckle

- The functionality of the harness buckle is essential for your child's safety. Malfunctions are typically caused by the buildup of dirt and dust.

### Notes for Cleaning the Car Seat

- To maintain the proper functionality of the car seat, please ensure that only original replacement seat covers are used. Replacement seat covers are essential for the correct performance of the car seat and are available from your retailer or authorized branches.
- The cover can be removed and washed with a mild detergent on the washing machine's delicate cycle (30°C). Follow the instructions on the washing label of the cover.
- The cover's colors may fade if washed at temperatures higher than 30°C. Do not spin dry, and never use an electric dryer as the fabric may separate from the padding.

### To Maintain Optimal Protection

- In the event of a collision at a speed exceeding 10 km/h, the child safety seat may incur damage that is not immediately visible.
- It is important to replace the child seat after such incidents to ensure continued safety. Proper disposal of the damaged seat is required.

## 9. Warranty

We provide a 7-year warranty for this child car seat against manufacturing or material defects, and a 2-year warranty for the electronic components. The warranty period begins on the date of purchase. To validate the warranty, please keep the invoice and register your product on [welldon.com](http://welldon.com).

In the event of a warranty claim, the invoice must be returned along with the product. The warranty applies only to baby safety car seats that have been properly handled and sent to us in a clean condition.

### **The Warranty Does Not Cover:**

- Natural signs of wear and damage resulting from excessive stress.
- Damage resulting from inappropriate or improper use.
- Color fastness may diminish when exposed to UV radiation. However, all fabrics fade when exposed to UV radiation. This is not a material defect but a normal sign of wear that is not covered by the warranty.
- Buckle malfunction is often due to the accumulation of dirt and dust, which may prevent it from working properly. If this occurs, please check if you can clean it yourself without damaging the installation. If cleaning does not resolve the issue, please contact after sales service.

**For warranty claims, please contact your retailer directly. They will provide the necessary advice and support. When processing claims, product-specific depreciation rates will be applied. Please refer to our General Terms and Conditions, which are available from your retailer.**

## 10. Disposing Of Old Electronic Equipment

### **Important Note :**

- If a product displays the symbol of a crossed out rubbish bin, this means it is included in Directive 2002/96/EC.
- All electrical and electronic equipment should be disposed of separately from the municipal waste collection service, through collection points designated by the government or local authorities.
- Proper collection and treatment of unserviceable devices helps to prevent potential risks to the environment and public health.

For more information on how to dispose of your old electrical and electronic equipment, please contact your local council, your household waste disposal service or the shop where you purchased the product.



# 11. Safety Checklist

- Did you read and understand the vehicle owner's manual, this user's manual, and all labels found on this Child Restraint?
  - Is the Child Restraint Rear-Facing in an approved vehicle seat location?
  - Is the harness adjusted to the correct position according to the size of the baby?
  - Is the buckle strap snug against the child but not under the child?
  - Before installing the seat, can the Hawk-Eye installation detection system be used normally?
  - Is the child's height between 40 and 125 cm?
  - Are all the indicator lights on the car seat green before the vehicle starts moving?
- Is the seat installed in a forward-facing or rearward-facing position according to baby's stature before driving?

**If you answered YES to all these questions, you are good to go, and please DRIVE SAFELY!**